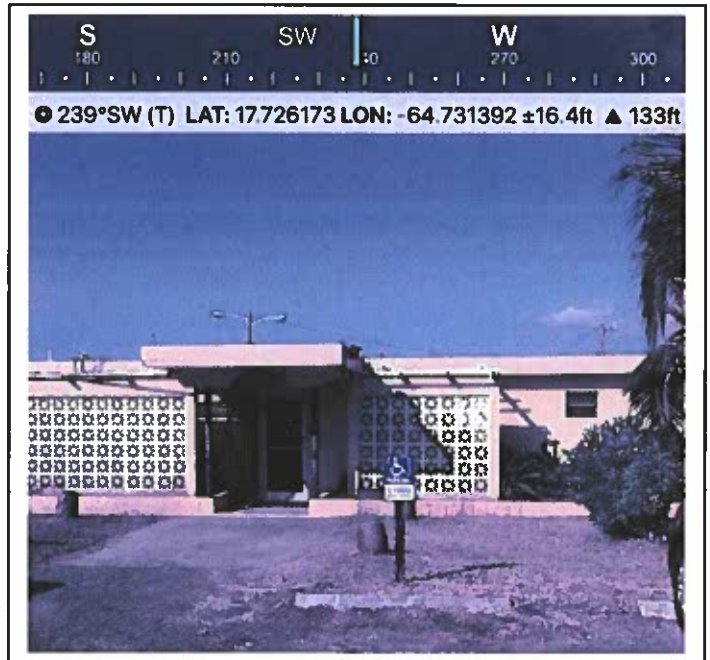


SITE INSPECTION PHOTO PAGE		DISASTER: DR-4340- V.I.		APPLICANT (FIPS#): 000-U4FAE-01	
INSPECTION DATE: 3/15/18	WORK ORDER #:	CATEGORY: E	COUNTY:	APPLICANT ADDRESS: 60006 Anna Hope Christiansted, VI 00820	
SITE INSPECTOR(S): Eva Brown		DAMAGE # / DAMAGE NAME: Environmental Enforcement			GPS COORDINATES: 17.726173 -64.731392



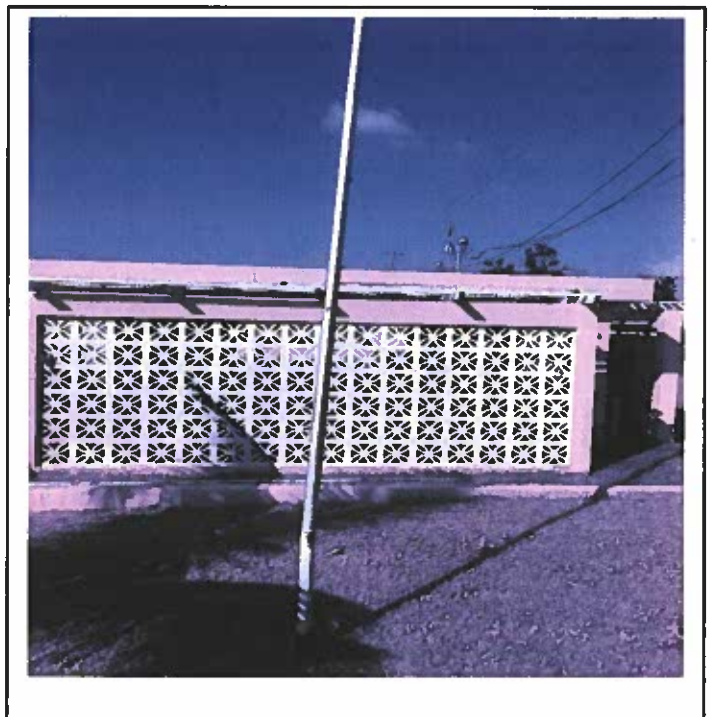
Exterior Stge



Exterior



Damage Porch



Parapet

SECTION 09300 – TILES

GOVERNMENT OF THE U. S. VIRGIN ISLANDS, DEPARTMENT OF PUBLIC WORKS

PROJECT NAME : REPAIRS TO DP&NR ENVIRONMENTAL OFFICE

Project Location, U.S. Virgin Islands

I. Setting Accessories:

1. Membrane waterproofing under tile.
2. Cementitious tile backer board.

J. Elastomeric Sealants:

1. One-part mildew-resistant silicone sealant for non-traffic areas.
2. Multi-part pourable urethane sealant for traffic areas.
3. Chemical-resistant sealant at chemical-resistant flooring.

PART 3 - EXECUTION

3.02 INSTALLATION

- A. Comply with Tile Council of America and ANSI Standard Specifications for Installation for substrate and installation required. Comply with manufacturer's instructions and recommendations.
- B. Lay tile in grid pattern with alignment grids. Layout to provide uniform joint widths and to minimize cutting; do not use less than 1/2 tile units.
- C. Provide sealant joints where recommended by TCA and approved by Owner's Representative.
- D. Grout and cure, clean and protect.

3.03 SCHEDULE

A. Tile Schedule:

1. Toilet Room Walls:
Glazed wall tile over masonry or cementitious backer unit with thin-set latex modified cement mortar and latex-Portland cement grout.
2. Toilet Room Floors:
Unglazed paver tile over concrete slab or wood decking with chemical resistant adhesive, latex Portland cement mortar and chemical resistant grout.
3. Other Areas:
Glazed paver tile over concrete slab or wood decking with chemical resistant adhesive, latex Portland cement mortar and chemical resistant grout.

END OF SECTION

09651- RESILIENT TILE FLOORING INCLUDING SOLID VINYL FLOOR TILE

GOVERNMENT OF THE U. S. VIRGIN ISLANDS, DEPARTMENT OF PUBLIC WORKS

PROJECT NAME

Project Location, U.S. Virgin Islands

dimensional stability and 100% recycled interlayer and base. Protected by surface treatment for No Wax maintenance.

B. Product Description: Resilient / Vinyl Tile flooring as per ASTM F1700.

1. Overall Thickness: Not less than 0.24 inch (6.0 mm)
2. Wear-Layer Thickness: Not less than 0.08 inch (2.0 mm)
3. Adhesive Method: as recommended per manufacturer's installation instructions to ensure proper installation and performance.
4. 100% REACH Compliant.
5. Applied Finish: Manufacturer's, factory-applied, permanent UV-cured.
6. Tile Size: GTI Connect 25.6'' x 25.6'' (650mm x 650mm)
GTI Control 25'' x 25'' (635mm x 635mm)
7. Color and Pattern:
 - a. As selected by Owner from manufacturer's standard colors and patterns.

C. Performance Criteria:

1. Maximum Static Load:
 - a. ASTM F970: Meets requirements
2. Rolling Loads: ASTM F2753, 500 cycles @ 100lbs: Excellent, no change
3. Indentation Hardness: ASTM D2240, 95
4. Chemical & Stain Resistance: EN 423, OK
5. Coefficient of Friction: ASTM D2047, 0.80 (DRY) / 0.82 (WET)
6. Fire Performance: ASTM E 648; Class 1
7. Slab Moisture Design Tolerance:
 - a. Maximum relative humidity of 92 percent when tested according to ASTM F 2170.
 - b. Maximum moisture vapor emission rate of 10 pounds of water per 1000 sq. ft. in 24 hours when tested according to ASTM F1869.

PART 3 - EXECUTION

3.1 EXAMINATION

- A. Verify the Following:**

09651- RESILIENT TILE FLOORING INCLUDING SOLID VINYL FLOOR TILE

GOVERNMENT OF THE U. S. VIRGIN ISLANDS, DEPARTMENT OF PUBLIC WORKS

PROJECT NAME

Project Location, U.S. Virgin Islands

1. The area in which the indoor resilient tile flooring will be installed is dry, weather-tight and in compliance with specified requirements.
2. Permanent heat, lighting and ventilation systems are installed and operable.
3. Other work, including overhead work, that could cause damage, dirt, dust or otherwise interrupt installation has been completed or suspended.
4. No foreign materials or objects are present on the substrate and that it is clean and ready for preparation and installation.
5. Tests to verify that the moisture vapor emission rate or substrate relative humidity is within the specified ranges.
6. The concrete slab surface deviation is no greater than 3/16 inch within 10 feet (4.5 mm within 3 m) as described in AC1117R.

3.2 PREPARATION

- A. Prepare substrates according to manufacturer's written recommendations to ensure proper adhesion of resilient flooring system.
- B. Concrete Substrates: Prepare according to ASTM F 710.
 1. Verify that substrates are dry and free of sealers, curing compounds and other additives. Remove coatings and other substances that are incompatible with adhesives using mechanical methods recommended by manufacturer.
- C. Moisture Testing: Perform ASTM F 2170 relative humidity test and proceed with installation only after substrates have maximum relative humidity of 92 percent.
- D. Use trowelable concrete based leveling and patching compound with the same moisture vapor tolerance as the adhesive to fill depressions, holes, cracks, grooves or other irregularities in substrate.
- E. Place flooring and installation materials into spaces where they will be installed at least 48 hours before installation. Install flooring materials only after they have reached the same temperature as space where they are to be installed.
- F. Sand the surface of the concrete slab.
- G. Sweep and then vacuum substrates immediately before installation. After cleaning, examine substrate for moisture, alkaline salts, grit, dust or other contamination. Proceed with installation only after unsatisfactory conditions have been corrected.

3.3 VINYL TILE FLOORING INSTALLATION

- A. General:
 1. Comply with resilient tile flooring manufacturer's installation instructions.
 2. Take necessary precautions to minimize noise, odors, dust and inconvenience during installation.

09651- RESILIENT TILE FLOORING INCLUDING SOLID VINYL FLOOR TILE

GOVERNMENT OF THE U. S. VIRGIN ISLANDS, DEPARTMENT OF PUBLIC WORKS

PROJECT NAME

Project Location, U.S. Virgin Islands

3. Fit flooring neatly and tightly to vertical surfaces, equipment anchors, floor outlets, and other interruptions of floor surface.
 4. Extend flooring into toe spaces, door reveals, closets, and similar openings unless otherwise indicated.
- B. Lay out flooring per manufacturer's recommendations.

3.4 CLEANING AND PROTECTION

- A. Perform the following operations after completing resilient flooring installation:
1. Remove marks and blemishes from flooring surfaces.
 2. Sweep and then vacuum flooring.
 3. Damp-mop flooring to remove soiling.
- B. Protect flooring from abrasions, indentations, and other damage from subsequent operations and placement of equipment, during remainder of construction period.

END OF SECTION

SECTION 09900 – PAINTING

GOVERNMENT OF THE U. S. VIRGIN ISLANDS, DEPARTMENT OF PUBLIC WORKS

PROJECT NAME

Project Location, U.S. Virgin Islands

PART 1 · GENERAL

1.1 RELATED DOCUMENTS

- A. Drawings and general provisions of the Contract, including General and Supplementary Conditions and Division 1 Specification Sections, apply to this Section.

1.2 SUMMARY

- A. This Section includes surface preparation and field painting of the following:

1. Exposed interior items and surfaces.
2. Surface preparation, priming, and finish coats specified in this Section are in addition to shop priming and surface treatment specified in other Sections.

- B. Paint exposed surfaces, except where the paint schedules indicate that a surface or material is not to be painted or is to remain natural. If the paint schedules do not specifically mention an item or a surface, paint the item or surface the same as similar adjacent materials or surfaces whether or not schedules indicate colors. If the schedules do not indicate color or finish, the Owner's Representative will select from standard colors and finishes available.

1. Painting includes field painting of exposed bare and covered pipes and ducts (including color coding), hangers, exposed steel and iron work, and primed metal surfaces of mechanical and electrical equipment.

- C. Do not paint prefinished items, concealed surfaces, finished metal surfaces, operating parts, and labels.

1. Prefinished items include the following factory-finished components:

- a. Architectural woodwork and casework.
- b. Elevator equipment.
- c. Finished mechanical and electrical equipment.
- d. Light fixtures.
- e. Distribution cabinets.

2. Concealed surfaces include walls or ceilings in the following generally inaccessible spaces:

- a. Ceiling plenums.

3. Finished metal surfaces include the following:

- a. Anodized aluminum
- b. Stainless steel
- c. Chromium plate
- d. Copper

SECTION 09900 – PAINTING

GOVERNMENT OF THE U. S. VIRGIN ISLANDS, DEPARTMENT OF PUBLIC WORKS

PROJECT NAME

Project Location, U.S. Virgin Islands

e. Bronze and brass

4. Operating parts include moving parts of operating equipment and the following:

a. Valve and damper operators

b. Linkages

c. Sensing devices

d. Motor and fan shafts

5. Labels:

Do not paint over Underwriters Laboratories (UL), Factory Mutual (FM), or other code required labels or equipment name, identification, performance rating, or nomenclature plates.

D. Related Sections include the following:

1. Division 5 Section "Structural Steel" for shop priming structural steel

2. Division 5 Section "Metal Fabrications" for shop priming ferrous metal

3. Division 6 Section "Interior Architectural Woodwork" for shop priming interior architectural woodwork

4. Division 8 Section "Steel Frames" for shop priming steel doors and frames

5. Division 9 Section "Gypsum Board Assemblies" for surface preparation for gypsum board

1.3 DEFINITIONS

A. General:

Standard coating terms defined in ASTM D 16 apply to this Section.

1. Flat refers to a lusterless or matte finish with a gloss range below 15 when measured at an 85- degree meter.

2. Eggshell refers to low-sheen finish with a gloss range between 5 and 20 when measured at a 60-degree meter.

3. Satin refers to low-sheen finish with a gloss range between 15 and 35 when measured at a 60- degree meter.

4. Semi-gloss refers to medium-sheen finish with a gloss range between 30 and 65 when measured at a 60-degree meter.

5. Full gloss refers to high-sheen finish with a gloss range more than 65 when measured at a 60- degree meter.

1.4 SUBMITTALS

A. Product Data:

For each paint system specified. Include block fillers and primers.

SECTION 09900 – PAINTING

GOVERNMENT OF THE U. S. VIRGIN ISLANDS, DEPARTMENT OF PUBLIC WORKS

PROJECT NAME

Project Location, U.S. Virgin Islands

1. **Material List:**

Provide an inclusive list of required coating materials. Indicate each material and cross-reference specific coating, finish system, and application. Identify each material by manufacturer's catalog number and general classification.

2. **Manufacturer's Information:**

Provide manufacturer's technical information, including label analysis and instructions for handling, storing, and applying each coating material proposed for use.

3. **Certification by the manufacturer that products supplied comply with local regulations controlling use of volatile organic compounds (VOCs).**

B. Samples for Verification:

Of each color and material to be applied, with texture to simulate actual conditions.

C. Qualification Data:

For firms and persons specified in the "Quality Assurance" Article to demonstrate their capabilities and experience. Include lists of completed projects with project names and addresses, names and addresses of Owner's Representative and owners, and other information specified.

1.5 QUALITY ASSURANCE

A. Applicator Qualifications:

Engage an experienced applicator who has completed painting system applications similar in material and extent to that indicated for this Project with a record of successful in- service performance.

B. Source Limitations:

Obtain block fillers, primers, and undercoat materials for each coating system from the same manufacturer as the finish coats.

1.6 DELIVERY, STORAGE, AND HANDLING

A. Deliver materials to the Project Site in manufacturer's original, unopened packages and containers bearing manufacturer's name and label, and the following information:

1. Product name or title of material
2. Product description (generic classification or binder type)
3. Manufacturer's stock number and date of manufacture
4. Contents by volume, for pigment and vehicle constituents
5. Thinning instructions
6. Application instructions
7. Color name and number
8. VOC content

B. Store materials not in use in tightly covered containers in a well-ventilated area. Maintain containers used in storage in a clean condition, free of foreign materials and residue.

SECTION 09900 – PAINTING

GOVERNMENT OF THE U. S. VIRGIN ISLANDS, DEPARTMENT OF PUBLIC WORKS

PROJECT NAME

Project Location, U.S. Virgin Islands

1. Keep storage area neat and orderly. Remove oily rags and waste daily. Take necessary measures to ensure that workers and work areas are protected from fire and health hazards resulting from handling, mixing, and application.

1.7 PROJECT CONDITIONS

- A. Apply water-based paints only when the temperature of surfaces to be painted and surrounding air temperatures are below 90°F (32°C).
- B. Apply solvent-thinned paints only when the temperature of surfaces to be painted and surrounding air temperatures are below 95°F (35°C).
- C. Do not apply paint when the relative humidity exceeds 85 percent; or at temperatures less than 5°F (3°C) above the dew point; or to damp or wet surfaces.
 1. Painting may continue during inclement weather if surfaces and areas to be painted are enclosed and within temperature limits specified by manufacturer during application and drying periods.

1.8 EXTRA MATERIALS

- A. Furnish extra paint materials from the same production run as the materials applied in the quantities described below. Package paint materials in unopened, factory-sealed containers for storage and identify with labels describing contents. Deliver extra materials to the Owner.
 1. Quantity:
Furnish the Owner with a 1-gallon can of each type of finish coat of each color, taken from lots furnished for the work.

PART 2 - PRODUCTS

2.1 MANUFACTURERS

A. Available Products:

Subject to compliance with requirements, products that may be incorporated into the Work include, but are not limited to, products listed in the paint schedules.

B. Manufacturers Names:

The following manufacturers are referred to in the paint schedules by use of shortened versions of their names, which are shown in parentheses:

1. Devoe & Raynolds Co. (Devoe).
2. Fuller-O'Brien Paints (Fuller).
3. Glidden Co. (The) (Glidden).
4. Benjamin Moore & Co. (Moore).
5. PPG Industries, Inc. (PPG).
6. Pratt & Lambert, Inc. (P & L).
7. Sherwin-Williams Co. (S-W).

SECTION 09900 – PAINTING

GOVERNMENT OF THE U. S. VIRGIN ISLANDS, DEPARTMENT OF PUBLIC WORKS

PROJECT NAME

Project Location, U.S. Virgin Islands

8. Martin Seymour Co. (MS).

2.2 PAINT MATERIALS, GENERAL

A. Material Compatibility:

Provide block fillers, primers, undercoats, and finish-coat materials that are compatible with one another and the substrates indicated under conditions of service and application, as demonstrated by manufacturer based on testing and field experience.

B. Material Quality:

Provide manufacturer's best-quality paint material of the various coating types specified. Paint-material containers not displaying manufacturer's product identification will not be acceptable.

1. Proprietary Names:

Use of manufacturer's proprietary product names to designate colors or materials is not intended to imply that products named are required to be used to the exclusion of equivalent products of other manufacturers. Furnish manufacturer's material data and certificates of performance for proposed substitutions.

C. Colors:

Match colors indicated by reference to manufacturer's color designations.

PART 3 - EXECUTION

3.1 EXAMINATION

- A. Examine substrates, areas, and conditions, with the Applicator present, under which painting will be performed for compliance with paint application requirements.

1. Do not begin to apply paint until unsatisfactory conditions have been corrected and surfaces receiving paint are thoroughly dry.
2. Start of painting will be construed as the Applicator's acceptance of surfaces and conditions within a particular area.

B. Coordination of Work:

Review other Sections in which primers are provided to ensure compatibility of the total system for various substrates. On request, furnish information on characteristics of finish materials to ensure use of compatible primers.

1. Notify the Owner's Representative about anticipated problems using the materials specified over substrates primed by others.

3.2 PREPARATION

A. General:

Remove hardware and hardware accessories, plates, machined surfaces, lighting fixtures, and similar items already installed that are not to be painted. If removal is impractical or impossible because of the size or weight of the item, provide surface-applied protection before surface preparation and painting.

1. After completing painting operations in each space or area, reinstall items removed using workers skilled in the trades involved.

SECTION 09900 – PAINTING

GOVERNMENT OF THE U. S. VIRGIN ISLANDS, DEPARTMENT OF PUBLIC WORKS

PROJECT NAME

Project Location, U.S. Virgin Islands

B. Cleaning:

Before applying paint or other surface treatments, clean the substrates of substances that could impair the bond of the various coatings. Remove oil and grease before cleaning.

1. Schedule cleaning and painting so dust and other contaminants from the cleaning process will not fall on wet, newly painted surfaces.

C. Surface Preparation:

Clean and prepare surfaces to be painted according to manufacturer's written instructions for each particular substrate condition and as specified.

1. Provide barrier coats over incompatible primers or remove and re-prime.

2. Ferrous Metals:

Clean un-galvanized ferrous metal surfaces that have not been shop coated; remove oil, grease, dirt, loose mill scale, and other foreign substances. Use solvent or mechanical cleaning methods that comply with the Steel Structures Painting Council's (SSPC) recommendations.

- a. Blast steel surfaces clean as recommended by paint system manufacturer and according to requirements of SSPC-SP 10.
- b. Treat bare and sandblasted or pickled clean metal with a metal treatment wash coat before priming.
- c. Touch up bare areas and shop-applied prime coats that have been damaged. Wire-brush, clean with solvents recommended by paint manufacturer, and touch up with the same primer as the shop coat.

3. Galvanized Surfaces:

Clean galvanized surfaces with nonpetroleum-based solvents so surface is free of oil and surface contaminants. Remove pretreatment from galvanized sheet metal fabricated from coil stock by mechanical methods.

D. Materials Preparation:

Mix and prepare paint materials according to manufacturer's written instructions.

1. Maintain containers used in mixing and applying paint in a clean condition, free of foreign materials and residue.
2. Stir material before application to produce a mixture of uniform density. Stir as required during application. Do not stir surface film into material. If necessary, remove surface film and strain material before using.
3. Use only thinners approved by paint manufacturer and only within recommended limits.

E. Tinting:

Tint each undercoat a lighter shade to simplify identification of each coat when multiple coats of the same material are applied. Tint undercoats to match the color of the finish coat, but provide sufficient differences in shade of undercoats to distinguish each separate coat.

3.3 APPLICATION

A. General:

Apply paint according to manufacturer's written instructions. Use applicators and techniques best suited for substrate and type of material being applied.

SECTION 09900 – PAINTING

GOVERNMENT OF THE U. S. VIRGIN ISLANDS, DEPARTMENT OF PUBLIC WORKS

PROJECT NAME

Project Location, U.S. Virgin Islands

1. Paint colors, surface treatments, and finishes are indicated in the schedules.
2. Do not paint over dirt, rust, scale, grease, moisture, scuffed surfaces, or conditions detrimental to formation of a durable paint film.
3. Provide finish coats that are compatible with primers used.
4. The term "exposed surfaces" includes areas visible when permanent or built-in fixtures, convector covers, covers for finned-tube radiation, grilles, and similar components are in place. Extend coatings in these areas, as required, to maintain the system integrity and provide desired protection.
5. Paint surfaces behind movable equipment and furniture the same as similar exposed surfaces. Before the final installation of equipment, paint surfaces behind permanently fixed equipment or furniture with prime coat only.
6. Paint back sides of access panels and removable or hinged covers to match exposed surfaces.
7. Finish exterior doors on tops, bottoms, and side edges the same as exterior faces.
8. Sand lightly between each succeeding enamel or varnish coat.

B. Scheduling Painting:

Apply first coat to surfaces that have been cleaned, pretreated, or otherwise prepared for painting as soon as practicable after preparation and before subsequent surface deterioration.

1. The number of coats and the film thickness required are the same regardless of application method. Do not apply succeeding coats until the previous coat has cured as recommended by the manufacturer. If sanding is required to produce a smooth, even surface according to manufacturer's written instructions, sand between applications.
2. Omit primer on metal surfaces that have been shop primed and touch up painted.
3. If undercoats, stains, or other conditions show through final coat of paint, apply additional coats until paint film is of uniform finish, color, and appearance. Give special attention to ensure edges, corners, crevices, welds, and exposed fasteners receive a dry film thickness equivalent to that of flat surfaces.
4. Allow sufficient time between successive coats to permit proper drying. Do not recoat surfaces until paint has dried to where it feels firm, does not deform or feel sticky under moderate thumb pressure, and where application of another coat of paint does not cause the undercoat to lift or lose adhesion.

C. Application Procedures:

Apply paints and coatings by brush, roller, spray, or other applicators according to manufacturer's written instructions.

1. **Brushes:**
Use brushes best suited for the type of material applied. Use brush of appropriate size for the surface or item being painted.
2. **Rollers:**
Use rollers of carpet, velvet back, or high-pile sheep's wool as recommended by the manufacturer for the material and texture required.
3. **Spray Equipment:**
Use airless spray equipment with orifice size as recommended by the manufacturer for the material

SECTION 09900 – PAINTING

GOVERNMENT OF THE U. S. VIRGIN ISLANDS, DEPARTMENT OF PUBLIC WORKS

PROJECT NAME

Project Location, U.S. Virgin Islands

and texture required.

D. Minimum Coating Thickness:

Apply paint materials no thinner than manufacturers recommended spreading rate. Provide the total dry film thickness of the entire system as recommended by the manufacturer.

E. Mechanical and Electrical Work:

Painting of mechanical and electrical work is limited to items exposed in equipment rooms and in occupied spaces.

F. Mechanical items to be painted include, but are not limited to, the following:

1. Piping, pipe hangers, and supports
2. Equipment supports
3. Accessory items

G. Electrical items to be painted include, but are not limited to, the following:

1. Conduit and fittings

H. Prime Coats:

Before applying finish coats, apply a prime coat of material, as recommended by the manufacturer, to material that is required to be painted or finished and that has not been prime coated by others. Recoat primed and sealed surfaces where evidence of suction spots or unsealed areas in first coat appears, to ensure a finish coat with no burn through or other defects due to insufficient sealing.

J. Pigmented (Opaque) Finishes:

Completely cover surfaces as necessary to provide a smooth, opaque surface of uniform finish, color, appearance, and coverage. Cloudiness, spotting, holidays, laps, brush marks, runs, sags, ropiness, or other surface imperfections will not be acceptable.

K. Transparent (Clear) Finishes:

Use multiple coats to produce a glass-smooth surface film of even luster. Provide a finish free of laps, runs, cloudiness, color irregularity, brush marks, orange peel, nail holes, or other surface imperfections.

1. Provide satin finish for final coats.

L. Completed Work:

Match approved samples for color, texture, and coverage. Remove, refinish, or repaint work not complying with requirements.

3.4 CLEANING

A. Cleanup:

At the end of each workday, remove empty cans, rags, rubbish, and other discarded paint materials from the site.

1. After completing painting, clean glass and paint-spattered surfaces. Remove spattered paint by washing and scraping. Be careful not to scratch or damage adjacent finished surfaces.

3.5 PROTECTION

SECTION 09900 – PAINTING

GOVERNMENT OF THE U. S. VIRGIN ISLANDS, DEPARTMENT OF PUBLIC WORKS

PROJECT NAME

Project Location, U.S. Virgin Islands

- A. Protect work of other trades, whether being painted or not, against damage by painting. Correct damage by cleaning, repairing or replacing, and repainting, as approved by Owner's Representative.
- B. Provide "Wet Paint" signs to protect newly painted finishes. Remove temporary protective wrappings provided by others to protect their work after completing painting operations.
 1. At completion of construction activities of other trades, touch up and restore damaged or defaced painted surfaces. Comply with procedures specified in PDCA Pl.

3.6 EXTERIOR PAINT SCHEDULE

A. Ferrous Metal:

Provide the following finish systems over exterior ferrous metal. Primer is not required on shop-primed items.

1. Semi-gloss, Acrylic-Enamel Finish:

2 finish coats over a rust-inhibitive primer.

- a. Primer:

Rust-inhibitive metal primer applied at spreading rate recommended by the manufacturer to achieve a total dry film thickness of not less than 1.3 mils (0.033 mm).

- b. First and Second Coats:

Semi-gloss, exterior, acrylic-latex enamel applied at spreading rate recommended by the manufacturer to achieve a total dry film thickness of not less than 2.6 mils (0.066 mm).

3.7 INTERIOR PAINT SCHEDULE

A. Gypsum Board:

Provide the following finish systems over interior gypsum board surfaces:

1. Flat Acrylic Finish:

2 finish coats over a primer

2. Primer:

Latex-based, mildew inhibiting interior primer, such as Kilz2 or approved equal, applied at spreading rate recommended by the manufacturer to achieve a total dry film thickness of not less than 1.2 mils (0.031 mm).

3. Use only thinners approved by paint manufacturer and only within the recommended limits.

B. First and Second Coats:

Flat, acrylic-latex-based, interior paint applied at spreading rate recommended by the manufacturer to achieve a total dry film thickness of not less than 2.5 mils (0.064 mm).

C. Ferrous Metal:

Provide the following finish systems over ferrous metal:

1. Semi-gloss, Acrylic-Enamel Finish:

One finish coat over an enamel undercoat and a primer

- a. Primer:

Quick-drying, rust-inhibitive, alkyd-based or epoxy-metal primer, as recommended by the manufacturer for this substrate, applied at spreading rate recommended by the manufacturer to achieve a total dry film thickness of not less than 1.5 mils (0.038 mm).

SECTION 09900 – PAINTING

GOVERNMENT OF THE U. S. VIRGIN ISLANDS, DEPARTMENT OF PUBLIC WORKS

PROJECT NAME

Project Location, U.S. Virgin Islands

b. Undercoat:

Alkyd, interior enamel undercoat or semi-gloss, acrylic-latex, interior enamel, as recommended by the manufacturer for this substrate, applied at spreading rate recommended by the manufacturer to achieve a total dry film thickness of not less than 1.3 mils (0.033 mm).

c. Finish Coat:

Semi-gloss, acrylic-latex, interior enamel applied at spreading rate recommended by the manufacturer to achieve a total dry film thickness of not less than 1.3 mils (0.033 mm).

D. Zinc-Coated Metal:

Provide the following finish systems over zinc-coated metal:

1. Semi-gloss, Acrylic-Enamel Finish:

2 finish coats over a primer

a. Primer:

Galvanized metal primer applied at spreading rate recommended by the manufacturer to achieve a total dry film thickness of not less than 1.2 mils (0.031 mm).

b. First and Second Coats:

Semi-gloss, acrylic-latex, interior enamel applied at spreading rate recommended by the manufacturer to achieve a total dry film thickness of not less than 2.6 mils (0.066 mm).

E. Tinting:

Tint each undercoat a lighter shade to simplify identification of each coat when multiple coats of the same material are being applied. Tint undercoats to match the color of the finish coat, but provide sufficient difference in shade of undercoats to distinguish each separate coat.

END OF SECTION

SECTION 09900 – PAINTING

GOVERNMENT OF THE U. S. VIRGIN ISLANDS, DEPARTMENT OF PUBLIC WORKS

PROJECT NAME REPAIRS TO DP& NR ENVIRONMENTAL OFFICE

Project Location, U.S. Virgin Islands

PART 1 • GENERAL

1.1 RELATED DOCUMENTS

- A. Drawings and general provisions of the Contract, including General and Supplementary Conditions and Division 1 Specification Sections, apply to this Section.

1.2 SUMMARY

- A. This Section includes surface preparation and field painting of the following:

- 1. Exposed interior items and surfaces.
- 2. Surface preparation, priming, and finish coats specified in this Section are in addition to shop priming and surface treatment specified in other Sections.

- B. Paint exposed surfaces, except where the paint schedules indicate that a surface or material is not to be painted or is to remain natural. If the paint schedules do not specifically mention an item or a surface, paint the item or surface the same as similar adjacent materials or surfaces whether or not schedules indicate colors. If the schedules do not indicate color or finish, the Owner's Representative will select from standard colors and finishes available.

- 1. Painting includes field painting of exposed bare and covered pipes and ducts (including color coding), hangers, exposed steel and iron work, and primed metal surfaces of mechanical and electrical equipment.

- C. Do not paint prefinished items, concealed surfaces, finished metal surfaces, operating parts, and labels.

- 1. Prefinished items include the following factory-finished components:

- a. Architectural woodwork and casework.
- b. Elevator equipment.
- c. Finished mechanical and electrical equipment.
- d. Light fixtures.
- e. Distribution cabinets.

- 2. Concealed surfaces include walls or ceilings in the following generally inaccessible spaces:

- a. Ceiling plenums.

- 3. Finished metal surfaces include the following:

- a. Anodized aluminum
- b. Stainless steel
- c. Chromium plate
- d. Copper