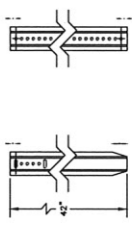


REG	STATE	PROJECT	SHEET NO.	TOTAL SHEETS
SE	VI	VI-1987(CO1)		40

**GENERAL NOTES**

1. BASE POST AND SIGN POST SHALL BE FLANGED CHANNEL. MEETING REQUIREMENTS OF ASTM A99-76. MINIMUM YIELD STRESS OF 60,000 PSI AND MINIMUM TENSILE OF 90,000 PSI, OR EQUAL.
2. THE FINISH FOR BASE POST AND SIGN POST SHALL BE GALVANNEAL. GALVANIZING SHALL BE APPLIED AFTER FABRICATION IS COMPLETED.
3. SIGN WEIGHT AND EACH BASE POST WEIGHT TOLERANCE SHALL BE PLUS OR MINUS 3/16% PUNCHING SHALL BE ON 1/4 INCH CENTERS. FIRST HOLE TO BE 1 INCH FROM POINTED END. LENGTH OF EACH BASE POST SHALL BE MINUS 1/8 INCH. LENGTH TOLERANCE SHALL BE PLUS OR MINUS 1/8 INCH.
4. THE WEIGHT OF EACH SIGN POST BEFORE PUNCHING SHALL BE 4.00 LB/FT. AS REQUIRED, WEIGHT TOLERANCE SHALL BE PLUS OR MINUS 0.05 LB/FT. SIGN POST SHALL BE A FULL LENGTH 0.435 INCH DIAMETER HOLES ON 1 INCH CENTER. SIGN POST SHALL BE 1 INCH FROM TOP OF POST. LAST HOLE SHALL BE 1 INCH FROM BOTTOM. LENGTH OF SIGN POST SHALL BE IN INCREMENTS OF 1/4 INCH. LENGTH TOLERANCE OF PLUS OR MINUS 1/8 INCH.
5. ALL POSTS SHALL BE MACHINE STRAIGHTENED AND HAVE EXCESSIVE BURRS REMOVED. ALL HOLES SHALL BE CAREFULLY DEBURRED. ALL HOLES SHALL BE 0.015 INCH DIAMETER. HOLES OF 0.150 INCH DIAMETER SHALL BE CAREFULLY DEBURRED. ALL HOLES SHALL BE 0.015 INCH DIAMETER. ALL HOLES WILL ALIGN FOR EASY ASSEMBLY. ALL BOLT HOLES AND SPACER HOLES SHALL BE COMMERCIAL FREE FROM BURRS.
6. RETAINER-SPACER STRAP SHALL BE FABRICATED FROM AISI-1020 STEEL AND GALVANIZED TO ASTM A123 SPECIFICATION.
7. BOLTS AND NUTS SHALL BE HEX. HEAD-INTERNAL FLANGE TYPE AND GALVANIZED TO ASTM A123 SPECIFICATION.
  - A. BOLT = 3/8" - 16 UNC X 2.00 (FULLY THREADED)
  - B. NUT = SELF-LOCKING TYPE



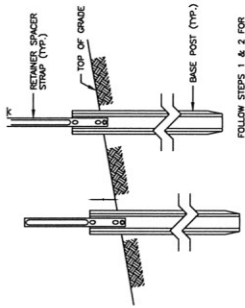
BASE POST      SIGN POST

NOT TO SCALE

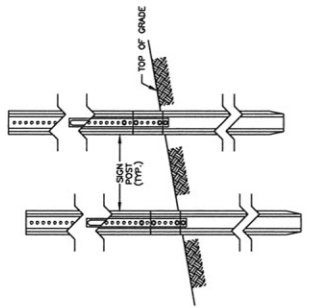
DEPARTMENT OF PUBLIC WORKS  
OFFICE OF HIGHWAY ENGINEERING

DETAIL  
PERMANENT  
SIGN MOUNTING DETAIL

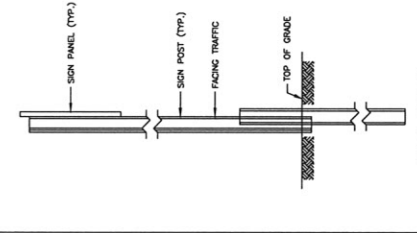
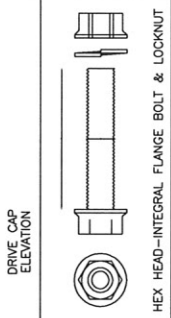
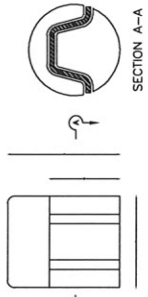
Sheet No. 2  
DETAIL  
63301(A)



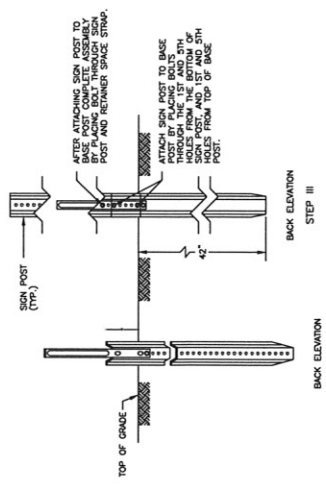
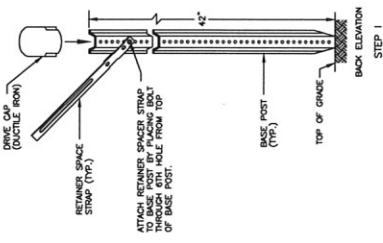
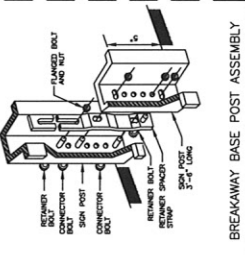
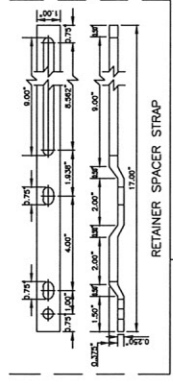
BACK ELEVATION  
STEP I



MULTIPLE POST INSTALLATION  
BACK ELEVATION  
STEP II



NOTE:  
BASE POST MUST BE DRIVEN PLUMB ABOUT 12 IN. STOP AND CHECK FOR STRAIGHTNESS. DRIVE POST AN ADDITIONAL 12-15 IN. REPEAT CHECK. MAKE FINAL ADJUSTMENTS. COMPLETE INSTALLATION FIELD CHECK FOR LENGTH OF SIGN POST BEFORE FABRICATION.



SINGLE POST INSTALLATION  
BACK ELEVATION  
STEP II  
BACK ELEVATION  
STEP III